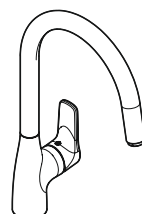


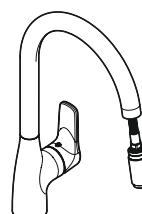
- ⒸZ Návod k instalaci a k použití
- Ⓔ Instrucciones de montaje y de manejo
- Ⓕ Instructions de montage et mode d'emploi
- ⒼB Installation and operating instructions
- Ⓕ Szerelési és használati utasítás
- Ⓘ Istruzioni di montaggio e per l'uso
- ⒼL Montagehandleiding en Gebruiksaanwijzing
- ⒼO Monterings- og bruksanvisning
- ⒼL Instrukcja montażu i obsługi
- Ⓔ Руководство по монтажу и эксплуатации
- ⒸK Návod na montáž a obsluhu



DESPU



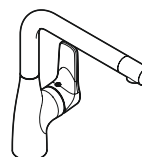
DESSPU



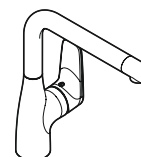
DESPUAA



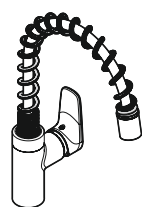
DESSPUAA



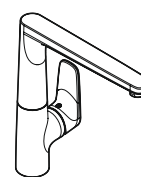
DESPL



DESSPL



DESSPPB



DESSPLG

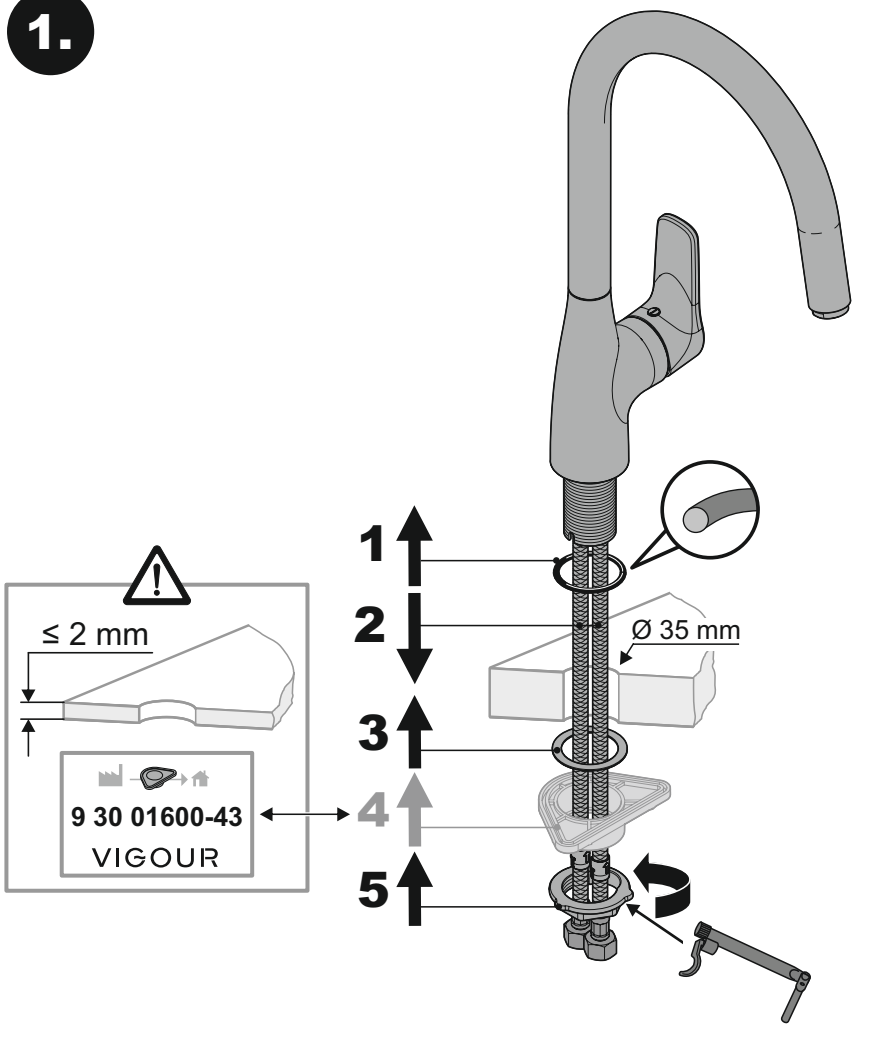
DIN EN 806
DIN EN 1717
DIN 1988
Global Standards

i

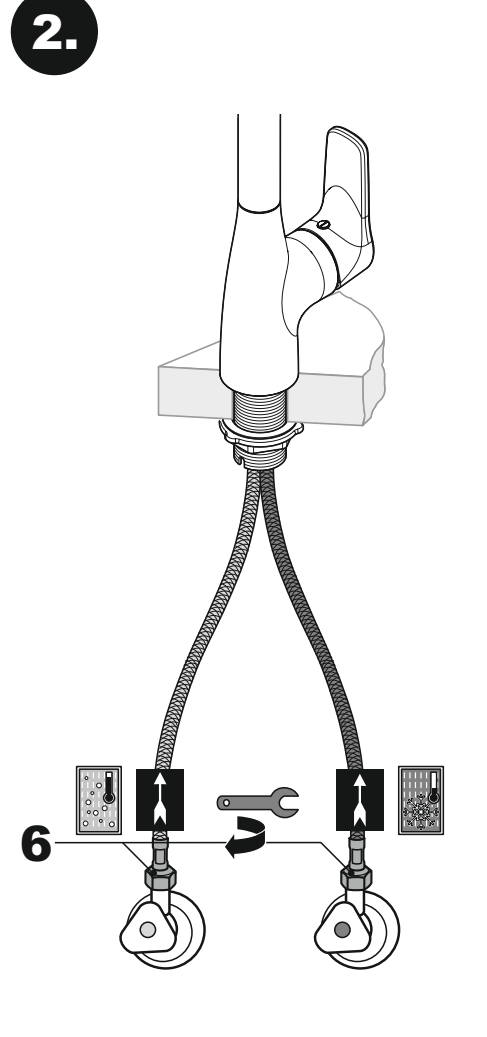
max.

	<p>°C / °F max. 70 °C / 158 °F min. 60 °C / 140 °F</p>	<p>✓ 3 bar / 43,5 psi min. 1 bar / 14,5 psi max. 10 bar / 145 psi</p>	<p>3 min.</p>	<p>max. 70 °C / 158 °F</p>		

1.



2.



3.

